



URBAN WOODS

From the heart of Transylvania

Est. 2010

2022 Catalog

In our workshop located in the heart of Transylvania we are turning salvaged wood into exquisite custom furniture pieces.

About us

Since 2010 we manufacture dining and coffee tables out of salvaged wood. We decided to salvage old trees that come bundled with many defects which would normally be rejected by other manufacturers of solid wood furniture.

In order to preserve the natural beauty of the wood we chose to emphasize these defects and even amplify them in our products. Therefore nodes or simple imperfections of the wood filled with transparent epoxy resin are an ubiquitous element in the products we create.

The production process is a long and difficult one. Once the trees are salvaged and brought into the workshop, the wood is cut and allowed to dry for up to three years before being processed and turned into dining or coffee tables.

We handle each process from standing trees to the finished product being delivered to your home.





Essence Collection

"One touch of nature makes the whole world kin"

— William Shakespeare

The Essence Collection's designer was Mother Nature herself. Each coffee table is her genuine fingerprint, always different and always unique.

Our main focus is trying to preserve the wood we work with in its purest form. The story line of each tree's life that's written in it's essence remains unaltered this way.

Most trees grow long but seldom grow wide. The larger the diameter, the older the tree so it has more stories to tell and scars to show.

We finish the tabletops with matte acrylic lacquer and epoxy for both emphasizing the details and protection from stains and humidity.

We usually use matte black Hairpin iron legs to keep the main focus on the coffee table's tabletop.

The diameters we work with are usually between 30cm and 130cm. The tabletops are 6-10cm thick and the standard height of the table is 40cm.

All of our products are custom made to best fit our clients needs.

Based on the measurements and preferences you get to select the exact slab you like us to use. Costs are based off of you selection, giving you a wider range of budget, style and finish options.



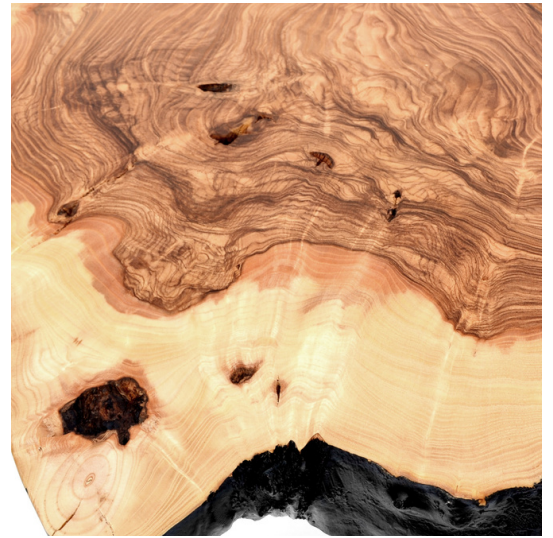
Species



Walnut



Oak



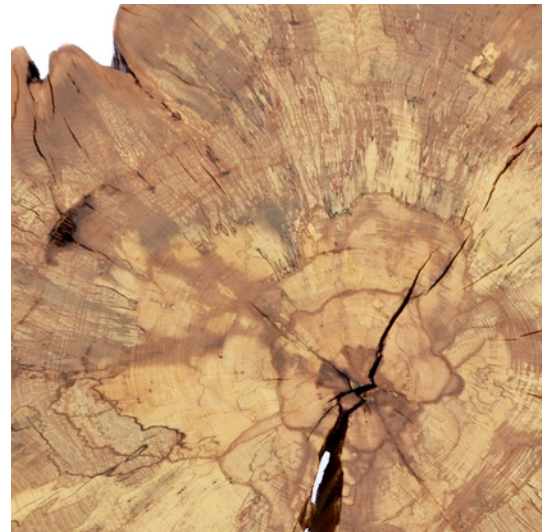
Ash



Whitened Spruce



Blackened Spruce



Beech



Oak Essence coffee tables

Oak is a popular choice for its durability.

It is a heavy hardwood with a beautiful grain. If you have an active family and furniture gets a lot of wear in your house, an oak coffee table is a good choice in part because it does not damage easily.

For practical reasons, we usually fill large gaps in the tabletop with clear epoxy resin.





Texture can vary a lot from one tabletop to another.

Sometimes we get to find spectacular cracks and colors inside old logs. Of course we always try to make the best of it and turn the wood into a unique coffee table.

Custom made Oak coffee table with Epoxy insertions and electric blue Hairpin legs



Spruce Black coffee tables

The ALL BLACK collections emphasize the fine lines and imperfections of the wood

Spruce is a lighter hardwood with rings in its texture that reveals the tree's age.

A curious eye might find a lot of mysteries hidden in the wood's cracks and nodes .

We decided to add a minimal and modern touch to our coffee tables with the matte black finish.





Sets of 2 coffee tables can be made on different heights so one can fit under the other's tabletop





Dining tables

The dining table is the heart of every home when family gathers around it. It is important for the dining room atmosphere to be warm and cozy, and there isn't another material that's warmer than wood.

Vertical "long cuts" of the wood reveal a true lifeline of the tree. There is a hidden story behind each node, scar or imperfection of the wood.

We frequently have to work with wood that had nails or other metallic fragments inside. It is a challenge and a delight working with such a surprising material.

Most of our tables are custom made for the need of our clients. You get to select the exact slabs you'd like us to use and costs are based off of your selection. We have a wide range of budget, style and finish options



Species



Walnut



Oak



Ash



Stained oak

Most of our dining tables are bookmatched out of 2 planks from the same tree that were following each other. This way the grain pattern is symmetrical and more aesthetically pleasing.

The 4cm thick tabletops are finished with matte acrylic lacquer which doesn't need to be reapplied like oil treatments do.

Nodes and cracks in the wood are always filled with Epoxy resin in order to achieve a perfectly flat and practical surface. We use clear epoxy with a matte finish so the details of the wood will get a 3D effect.

The standard leg is the Matte Black Metallic Geometry leg which is made out of steel. The size of the leg is adjusted depending on the size of the tabletop of each table.

The leg can also come in different colors too (white, grey, silver or golden).

Brute Walnut dining table



Brute Walnut dining table



Large gaps in the middle of the tabletop can also be left without epoxy insertions for a more natural effect.

Brute Walnut dining table



Brute Walnut dining table



Brute Oak dining table



Brute Oak dining table



Brute Oak dining table



Pictured above is a 300cm dining table with a custom-made leg to match its size

Brute Oak dining table

Epoxy insertions are included in the price.

The size of the insertions vary depending on the size of the defects in the wood.

On request pictures of the tabletops can be provided.



Classic Oak dining table



Classic Oak dining table



Classic Stained Oak dining table



Classic Stained Oak dining table



Stained Oak & Epoxy dining table



Stained Oak & Epoxy dining table





Oak & Epoxy Essence
coffee table



Oak & Epoxy Essence
coffee tables set



All-Black Essence
coffee table

Oak & Epoxy Essence
coffee tables set





Oak & Epoxy Brute
Dining table



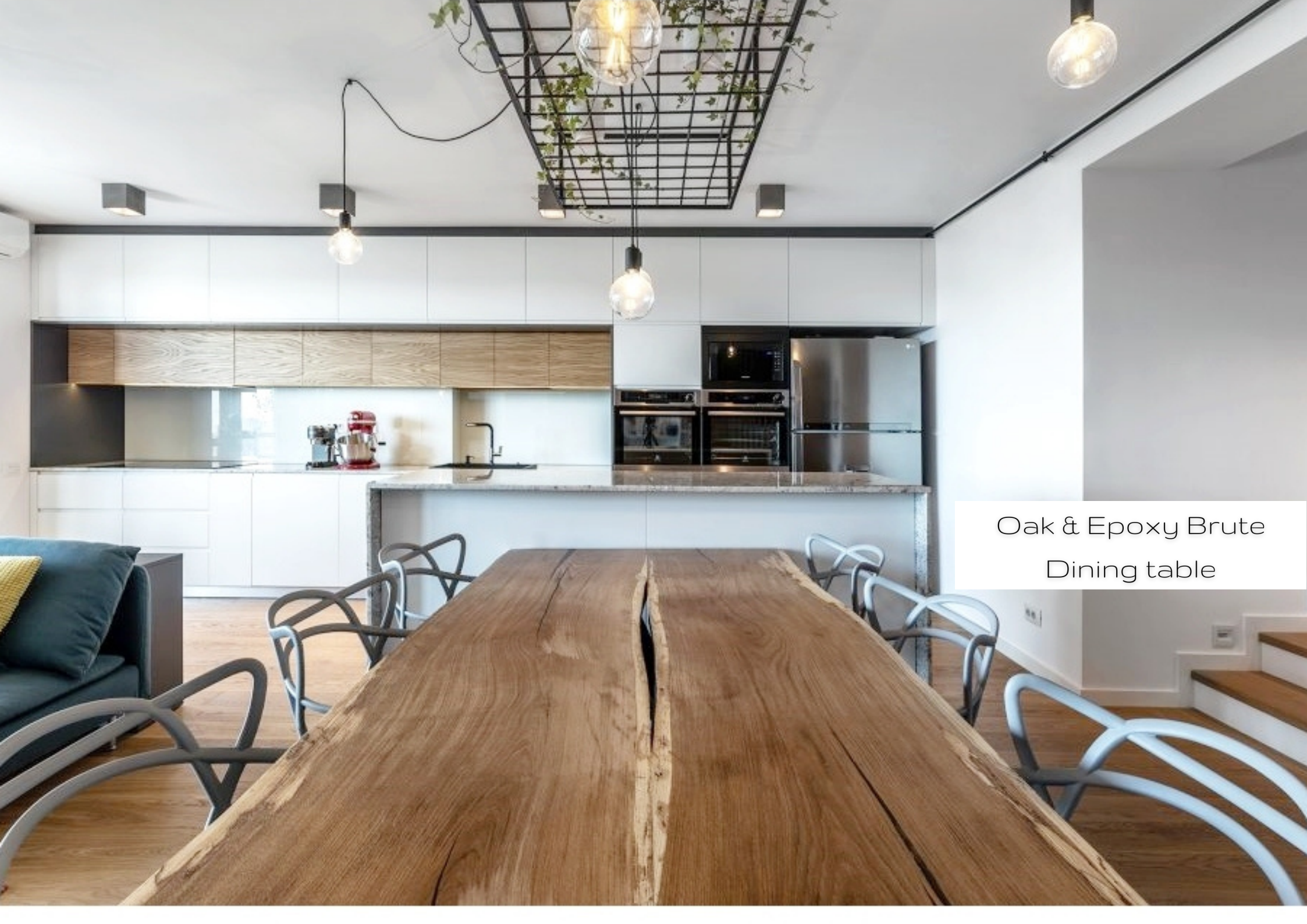
Oak & Epoxy Brute
Dining table



Brushed Oak & Epoxy
Brute Dining table



Brushed Oak & Epoxy
Brute Dining table



Oak & Epoxy Brute
Dining table

Oak & Epoxy Brute
Dining table



SJ

SANTOS JUZGADO
INTERIOR DESIGN

"Your space, endless possibilities"

Classic Stained
Dining table





Walnut & Epoxy Brute
Dining table

Brushed Oak Classic
Dining table





Brushed Oak Classic
Dining table



Classic Oak
Dining table



Classic Oak
Dining table



WWW.URBANWOODS.RO

contact@urbanwoods.ro

+40 748 905 157 +40 751 286 326

[instagram.com/urbanwoods.ro](https://www.instagram.com/urbanwoods.ro) [facebook.com/urbanwoods.ro](https://www.facebook.com/urbanwoods.ro)

515207 Magina, Alba County, Romania